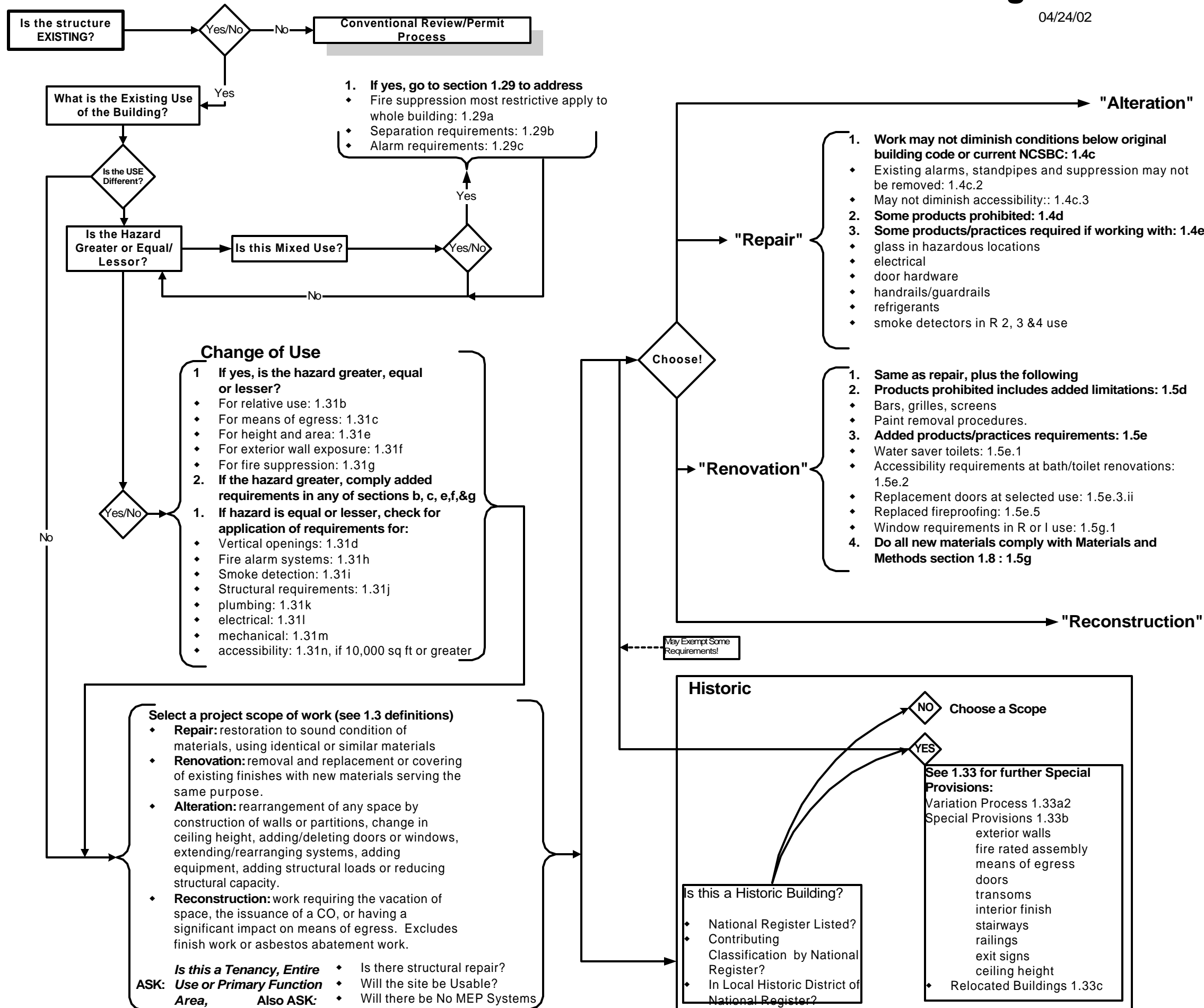


Rehab Code: Decision Diagram

04/24/02



- 1. If yes, go to section 1.29 to address**
- Fire suppression most restrictive apply to whole building: 1.29a
 - Separation requirements: 1.29b
 - Alarm requirements: 1.29c

- Change of Use**
- 1. If yes, is the hazard greater, equal or lesser?**
 - For relative use: 1.31b
 - For means of egress: 1.31c
 - For height and area: 1.31e
 - For exterior wall exposure: 1.31f
 - For fire suppression: 1.31g
 - 2. If the hazard greater, comply added requirements in any of sections b, c, e,f,&g**
- 1. If hazard is equal or lesser, check for application of requirements for:**
- Vertical openings: 1.31d
 - Fire alarm systems: 1.31h
 - Smoke detection: 1.31i
 - Structural requirements: 1.31j
 - plumbing: 1.31k
 - electrical: 1.31l
 - mechanical: 1.31m
 - accessibility: 1.31n, if 10,000 sq ft or greater

- Select a project scope of work (see 1.3 definitions)**
- **Repair:** restoration to sound condition of materials, using identical or similar materials
 - **Renovation:** removal and replacement or covering of existing finishes with new materials serving the same purpose.
 - **Alteration:** rearrangement of any space by construction of walls or partitions, change in ceiling height, adding/deleting doors or windows, extending/rearranging systems, adding equipment, adding structural loads or reducing structural capacity.
 - **Reconstruction:** work requiring the vacation of space, the issuance of a CO, or having a significant impact on means of egress. Excludes finish work or asbestos abatement work.
- Is this a Tenancy, Entire Use or Primary Function Area, Also ASK:**
- Is there structural repair?
 - Will the site be Usable?
 - Will there be No MEP Systems

Historic

Is this a Historic Building?

- National Register Listed?
- Contributing Classification by National Register?
- In Local Historic District of National Register?

Choose a Scope

See 1.33 for further Special Provisions:

- Variation Process 1.33a2
- Special Provisions 1.33b
 - exterior walls
 - fire rated assembly
 - means of egress
 - doors
 - transoms
 - interior finish
 - stairways
 - railings
 - exit signs
 - ceiling height
- Relocated Buildings 1.33c

- 1. Same as renovation, plus the following**
- 2. Added products/practices requirements: 1.6e**
 - Do accessibility requirement provisions for technically infeasible apply : 1.6e.2 iii
 - Is accessible entrance work in excess of 20% disproportionate cost: 1.6e.4.
 - Allows limited use of platform lifts: 1.6e5
 - Does the work performed create a bedroom, living space or other habitable space? 1.6e.9, 1.6e.10, 1.6e.11, 1.6e.12
- 3. Work may not make the building less conforming with Basic Requirements: 1.6g**
 - If the Basic Requirements are exceeded, may not decrease below NCSBC : 1.6g.1
- 4. Do all new building elements comply with section 1.9? : 1.6i**
- 5. Regarding accessibility, is the altered space a primary function space? 1.6j**
 - Is accessible path of travel work in excess of 20% disproportionate cost: 1.6j

- 1. Same as alteration, plus the following**
- 2. Added products/practices requirements: 1.7e**
 - Any new entrance steps shall provide a ramp, unless the work is in excess of 20% disproportionate cost: 1.7e.4.
 - Does the work performed create a habitable space with a ceiling height at 7ft minimum? 1.7e.9
- 3. Does the work area comply with the Basic Requirements for the specified use: 1.7h, and**
- 4. Does the scope of work trigger the specified use supplemental requirements:**
 - Use group A-1 Basic Requirements: 1.12 Supplemental Requirements: 1.12A
 - Use group A-2 Basic Requirements: 1.13 Supplemental Requirements: 1.13A
 - Use group A-3 Basic Requirements: 1.14 Supplemental Requirements: 1.14A
 - Use group A-4 Basic Requirements: 1.15 Supplemental Requirements: 1.15A
 - Use group A-5 Basic Requirements: 1.16 Supplemental Requirements: 1.16A
 - Use group B Basic Requirements: 1.17 Supplemental Requirements: 1.17A
 - Use group E Basic Requirements: 1.18 Supplemental Requirements: 1.18A
 - Use group F Basic Requirements: 1.19 Supplemental Requirements: 1.19A
 - Use group H Basic Requirements: 1.20 Supplemental Requirements: 1.20A
 - Use group I-1 Basic Requirements: 1.21 Supplemental Requirements: 1.21A
 - Use group I-2 Basic Requirements: 1.22 Supplemental Requirements: 1.22A
 - Use group I-3 Basic Requirements: 1.23 Supplemental Requirements: 1.23A
 - Use group M Basic Requirements: 1.24 Supplemental Requirements: 1.24A
 - Use group R-1 Basic Requirements: 1.25 Supplemental Requirements: 1.25A
 - Use group R-2 Basic Requirements: 1.26 Supplemental Requirements: 1.26A
 - Use group R-3/R-4 Basic Requirements: 1.27 Supplemental Requirements: 1.27A
 - Use group S Basic Requirements: 1.28 Supplemental Requirements: 1.28A
 - Check Special Technical Requirements 1.30